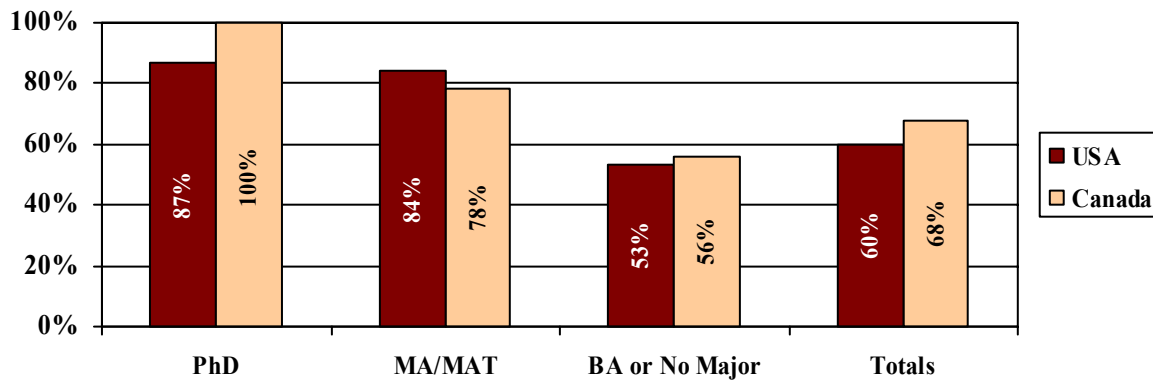


Supporting Charts for Professional Matters Report, December 2004

The following charts contain statistical information referred to in Barbara F. McManus's final report as APA Vice-President of Professional Matters; the report was published in the *American Philological Association Newsletter* 28.1 (February 2005): 19-22.

CHARTS FROM THE DEPARTMENTAL DATABASE, DECEMBER 2004

Figure 1
Percentage of Census Surveys Returned as of December, 2004
by Country and Highest Classics Degree



Notes: The master list of departments offering Classics courses contains 449 (Canada 41; US, 408); as of the end of December, 273 had returned the survey (Canada, 28; US, 245). The overall response rate for the census is currently 61%.

Figure 2
2002-2003 Faculty Totals by Gender and Tenure-Status, USA

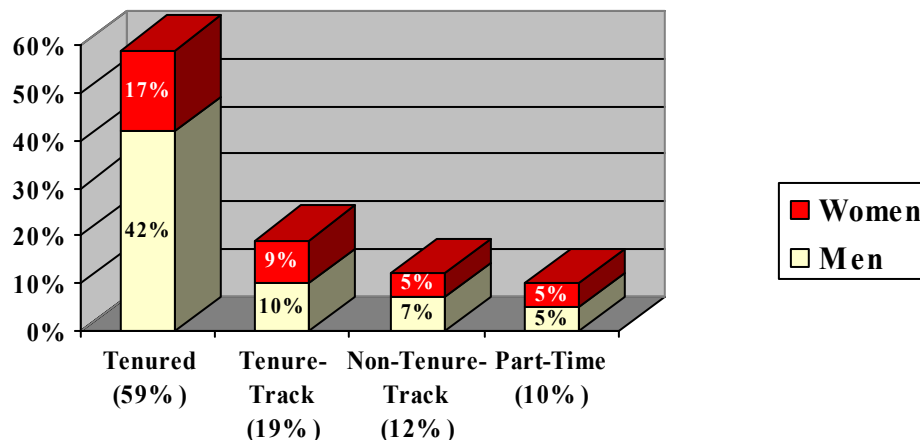
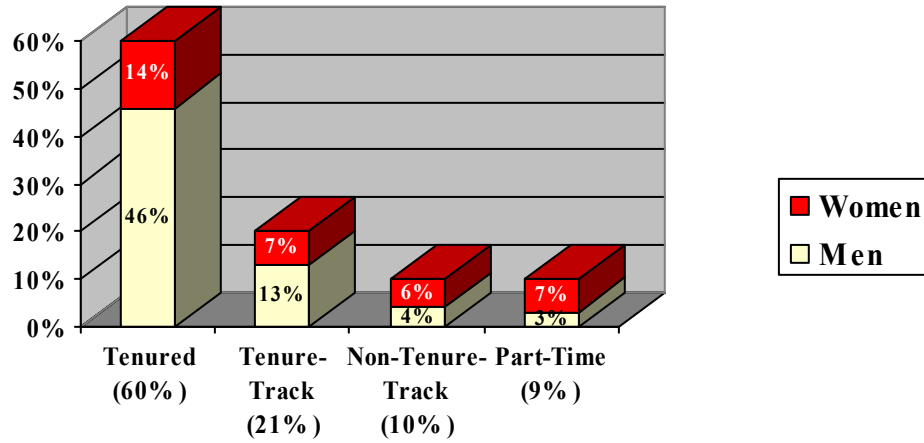


Figure 3
2002-2003 Faculty Totals by Gender and Tenure-Status, Canada



Notes: In the US in 2002-03, 22% of Classics faculty were non-tenure-track or part-time; in Canada, this figure was 19%. In the US, women comprise 36% of Classics faculty, and in Canada, 34%. The gender and tenure-status percentages for both countries combined are nearly identical with those for the USA.

Figure 4
Women's Percentage of Full-Time Academic Rank Categories by Highest Classics Degree Granted by US Departments, 2002-2003

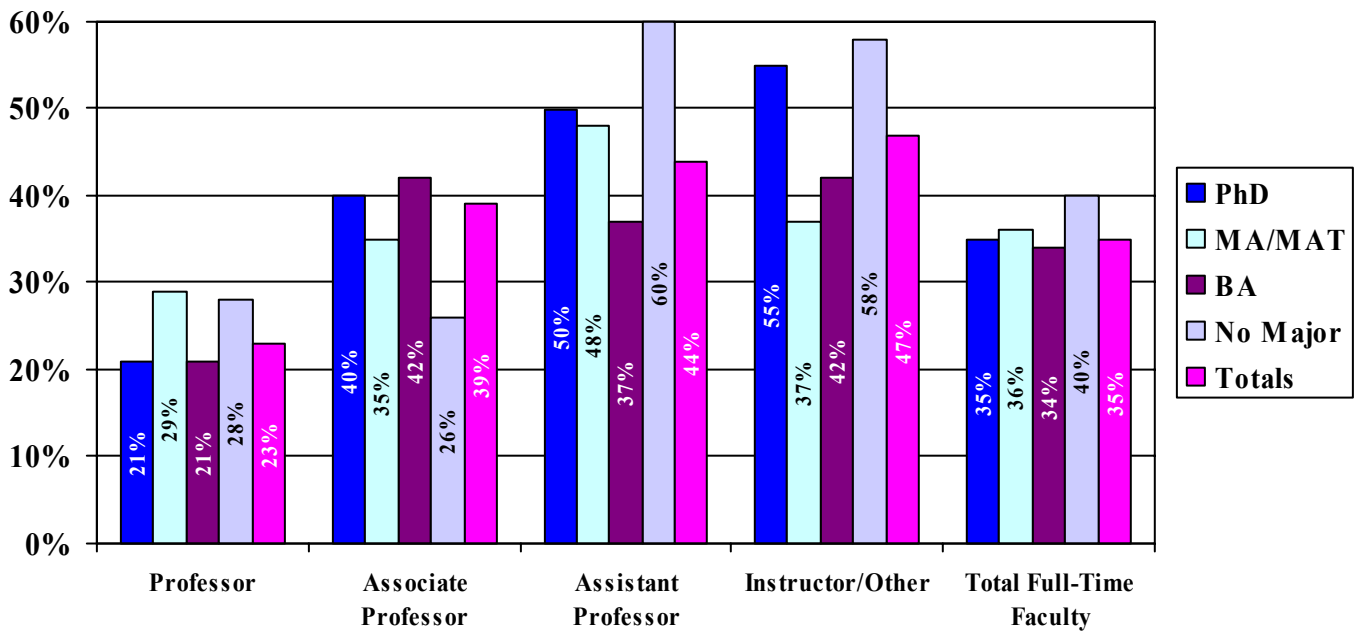
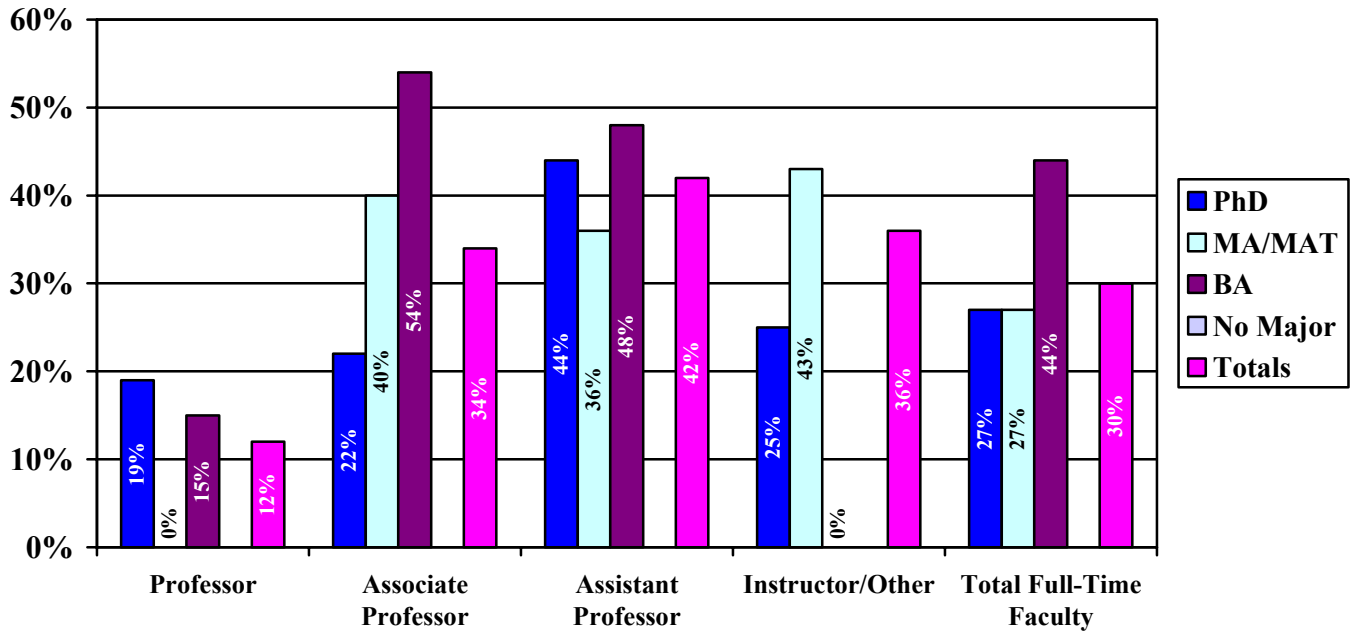


Figure 5
Women's Percentage of Full-Time Academic Rank Categories by Highest Classics Degree Granted by Canadian Departments, 2002-2003



Note: Of the 3 Canadian respondents with no Classics major, none employed any female classicists. The gender and rank percentages for both countries combined are nearly identical with those for the USA.

Figure 6
Percentage of Full-Time and Part-Time 2002-2003 Classics Positions Held by Members of Minority Groups by Highest Classics Degree, Both Countries

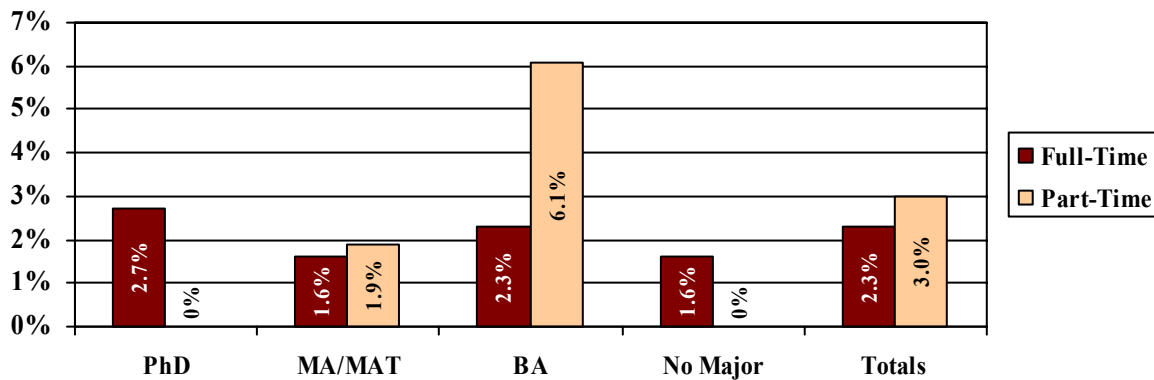
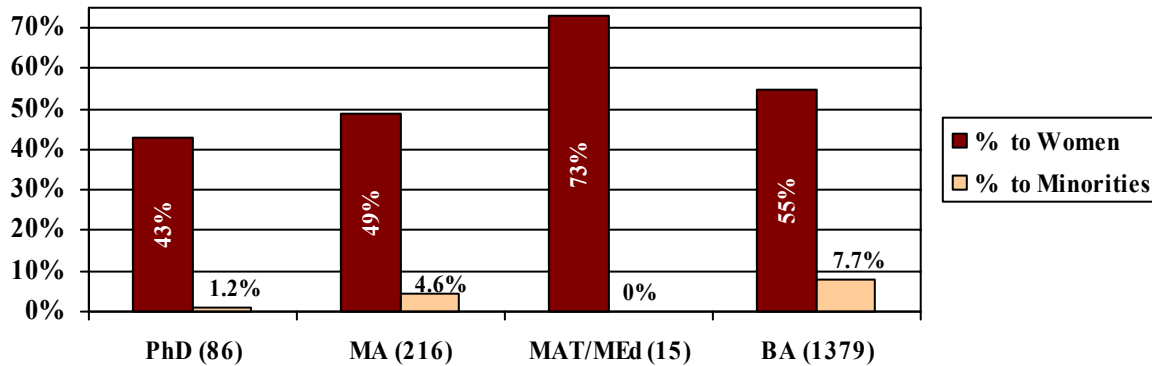


Figure 7
Classics Degrees Conferred in 2002-2003 by Gender and Minority Status, Both Countries



Notes: For purposes of comparison, I used information published by the *Digest of Education Statistics* to calculate the means for women's percentages of degrees in various fields conferred in the US between 1997-2000:

- All fields of study: BA -- 56% MA -- 57% PhD -- 42%
- Archaeology: BA -- 64% MA -- 54% PhD -- 67%
- Classics: BA -- 51% MA -- 47% PhD -- 43%
- English: BA -- 67% MA -- 66% PhD -- 59%
- Foreign Languages: BA -- 70% MA -- 68% PhD -- 58%
- History: BA -- 40% MA -- 41% PhD -- 39%

CHARTS FROM THE PLACEMENT DATABASE, 2000-2001 to 2003-2004

Percentages in the following figures refer to all candidates but *Subscribers Only* in the relevant groups.

Figure 8
Ratio of Placement Candidates to Actual Academic Hires Known to the APA

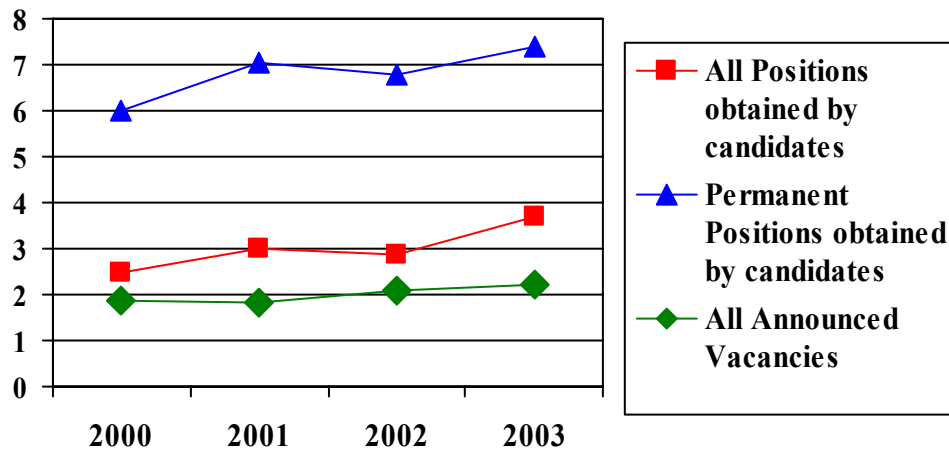


Figure 9
Percentage of Candidates Obtaining New Academic Positions

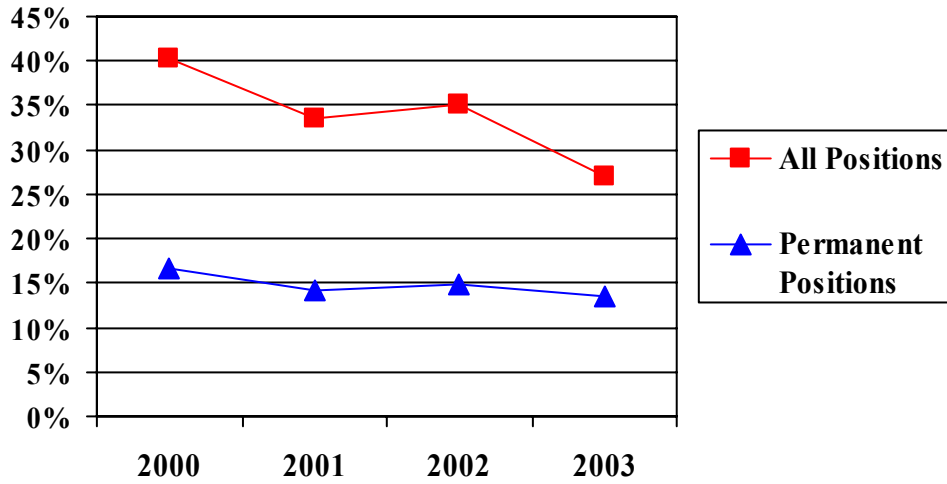


Figure 10
Average Number of Interviews by Candidates' Age Group

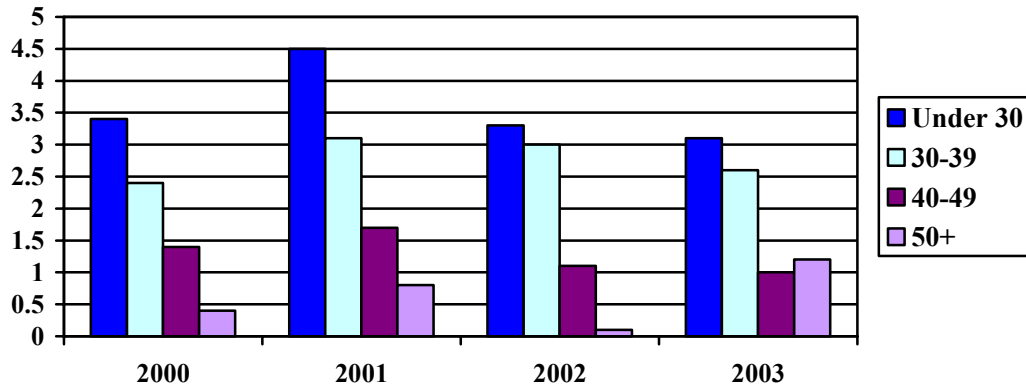


Figure 11
Percent of Candidates in Age Group with New Academic Positions

